

UNITED STATES DEPARTMENT OF THE INTERIOR  
NATIONAL PARK SERVICE  
NATIONAL REGISTER OF HISTORIC PLACES  
REGISTRATION FORM

OMB NO. 1024-0018, NPS FORM

This form is for use in nominating or requesting determinations for individual properties or districts. See instructions in How to Complete the National Register of Historic Places Registration Form (National Register Bulletin 16A). Complete each item by marking "x" in the appropriate box or by entering information requested. If an item does not apply to the property being documented, enter "N/A" for "not applicable." For functions, architectural classifications, materials, and areas of significance, enter only categories and subcategories from the instructions. Place additional entries and narrative items on continuation sheets (NPS Form 10-900a). Use a typewriter, word processor, or computer, to complete all items.

1. Name of Propertyhistoric name Amsterdam (46th Separate Company) Armory

other names/site number \_\_\_\_\_

2. Locationstreet & number Florida Avenue at DeWitt Street

[ ] not for publication

city Amsterdam

[ ] vicinity

state New York code NY county Montgomery code 057 zip code 12010-57993. State/Federal Agency Certification

As the designated authority under the National Historic Preservation Act of 1966, as amended, I hereby certify that this [X] nomination [ ] request for determination of eligibility meets the documentation standards for registering properties in the National Register of Historic Places and meets the procedural and professional requirements set forth in 36 CFR Part 60. In my opinion, the property [X] meets [ ] does not meet the National Register criteria. I recommend that this property be considered significant [ ] nationally [ ] statewide [X] locally. ([ ] See continuation sheet for additional comments.)

David S. Gellman  
Deputy Commissioner for Historic Preservation

5/24/94  
Date

NYS Office of Parks, Recreation and Historic Preservation

In my opinion, the property [ ] meets [ ] does not meet the National Register criteria. ([ ] See continuation sheet for additional comments.)

\_\_\_\_\_  
Signature of commenting or other official  
State or federal agency and bureau

Date

4. National Park Service Certification

I hereby, certify that this property is:

Signature of keeper

Date of Action

[ ] entered in the National Register.

[ ] See continuation sheet.

[ ] determined eligible for the National Register. [ ] see continuation sheet.

[ ] determined not eligible for the National Register.

[ ] removed from the National Register.

[ ] other: \_\_\_\_\_

Amsterdam (46th Separate Company) Armory, Amsterdam, Montgomery County, NY

### 5. Classification

Ownership of Property/Category of Property/Number of Resources within Property  
 (Check as many boxes as apply) (check box) (do not include previously listed resources in the count)

<input type="checkbox"/> private	<input checked="" type="checkbox"/> building(s)	Contributing	Noncontributing	
<input type="checkbox"/> public-local	<input type="checkbox"/> district	1	1	buildings
<input checked="" type="checkbox"/> public-State	<input type="checkbox"/> site			sites
<input type="checkbox"/> public-Federal	<input type="checkbox"/> structure			structures
	<input type="checkbox"/> object			objects
		1	1	Total

Number of contributing resources previously listed in the National Register: NA

NAME OF RELATED MULTIPLE PROPERTY DOCUMENTATION FORM:

ARMY NATIONAL GUARD ARMORIES IN NEW YORK STATE

### 6. Function or Use

Historic Function

Current Function

DEFENSE; Armory

Vacant

### 7. Description

Architectural Classification  
 (enter categories from instructions)

LATE VICTORIAN; Castellated

Materials  
 (enter categories from instructions)

foundation stone  
 walls brick and limestone

roof unknown  
 other \_\_\_\_\_

Narrative Description

See attached continuation sheets.

OMB No. 1024-0018, NPS Form

United States Department of the Interior  
National Park Service

NATIONAL REGISTER OF HISTORIC PLACES  
CONTINUATION SHEET

Amsterdam (46th Separate Company) Armory  
Amsterdam, Montgomery County, New York

Section 7, Description, page 1

---

Description

The Amsterdam (46th Separate Company) Armory (1895), a massive, brick and stone edifice executed in the castellated style, is located on the southwest corner of the intersection of Florida Avenue and DeWitt Street in the historic core of South Amsterdam. (South Amsterdam, originally a separate village on the south side of the Mohawk River known as Port Jackson, was incorporated into the city of Amsterdam on the north side of the river in the early twentieth century.) The surrounding neighborhood consists of altered late nineteenth and early twentieth century middle-class houses on relatively small lots. Several altered older commercial buildings are located along Bridge Street north of the armory. The neighborhood is a locally designated historic district; insufficient information exists to evaluate its National Register eligibility at this time.

The boundary is drawn to encompass the one-acre lot historically (and currently) associated with the armory (tax map #55.50-2-30). The lot slopes steeply downward to the north as the terrain descends to the Mohawk River below. The armory is sited on the highest point, i.e., the southern half, of the lot, thereby greatly emphasizing its towering, fortress-like character. The north (front) and east sections of the lot are buttressed with massive concrete retaining walls. An historic photo in the armory's archives shows that the retaining walls originally were of rough-hewn ashlar construction; a small section of the original wall survives at the northwest corner of the property. The historic photo also shows that the original staircase ran straight up the hill from Florida Avenue; the modern concrete staircase now approaches the front (north) entrance from DeWitt Street to the east. Sloping lawns flank the armory to the east and north. A densely overgrown lot adjoins the armory to the west. A narrow, paved driveway runs along the rear (south) of the building and provides access to the small, gravel-covered parking lot at the southwest corner of the drill shed.

The armory, a massive red brick building with rough-hewn grey limestone trim, consists of a two-story administration building with an attached drill shed. Both sections rest on raised, rusticated stone foundations with rough-hewn water tables. All construction is of load-bearing masonry. Fenestration throughout

OMB No. 1024-0018, NPS Form

United States Department of the Interior  
National Park Service

NATIONAL REGISTER OF HISTORIC PLACES  
CONTINUATION SHEET

Amsterdam (46th Separate Company) Armory  
Amsterdam, Montgomery County, New York

Section 7, Description, page 2

---

the armory is generally symmetrical. All window openings are rectangular (although some are taller and narrower than others) and most have rough-hewn limestone lintels and sills and chamfered brick reveals.

The administration building, i.e., the front (north) section of the facility, is an imposing, medieval-inspired edifice composed of an asymmetrical main block flanked by two massive corner towers. Tall, narrow window openings throughout the administration building contain one-over-one, double-hung sash. All first-story windows are protected by iron bars. A brick parapet, originally crenelated, encircles the administration building. All crenelations on the main block and four towers have been filled in with brick; only the two narrow hyphens between the main block and corner towers retain their original crenelations. The entire parapet is embellished with a denticular cornice and regularly spaced rifle slits, most of which have been partially filled in with brick.

The focal point of the main block is the entrance pavilion, which is composed of a massive, round-arched sally port flanked on each side by a two and one-half story, engaged tower. The sally port is trimmed with rough-hewn limestone voussoirs and protected by a portcullis. The entrance, a steel double-door surmounted by a segmentally arched transom light with chamfered brick trim, is deeply recessed under the sally port. A balcony with stone coping and corbelled brick trim is located directly above the sally port. A stone tablet, inscribed "46th Separate Company Armory," is located above the balcony. The two towers flanking the sally port retain their original corbelled brick cornices but have had their parapet crenelations and rifle slits filled in with brick.

Towering over the entire administration building is the five-story, octagonal engaged tower at the northeast corner of the main block. The first half-story of the tower consists of thick, battered walls of roughly hewn limestone. Evenly spaced one-over-one, double-hung windows with roughly hewn stone lintels and sills light the first, second and third stories. The fourth story features groups of three small, narrow windows with common lintels and sills. The front facade of the administration building is completed with a three and one-half story, round engaged tower at the northwest

OMB No. 1024-0018, NPS Form

United States Department of the Interior  
National Park Service

NATIONAL REGISTER OF HISTORIC PLACES  
CONTINUATION SHEET

Amsterdam (46th Separate Company) Armory  
Amsterdam, Montgomery County, New York

Section 7, Description, page 3

---

corner. This tower also features regularly spaced one-over-one, double-hung windows.

The east and west elevations of the two-room deep administration building feature regularly spaced one-over-one, double-hung windows with rough-hewn stone lintels and sills and chamfered brick reveals.

The drill shed, oriented on a north-south axis along DeWitt Street, extends from the rear (south) of the administration building. It features a steeply pitched gable roof supported by massive steel trusses and clad with modern asphalt shingles. A one-story shed-roofed locker room wing with a denticular cornice spans the east elevation of the drill shed. The locker room wing, contemporary with the rest of the facility, features slightly irregular fenestration: eight pairs of double-hung sash with protective iron grilles and rough-hewn lintels and sills and one doorway are unevenly spaced along the east elevation. The west elevation of the drill shed is obscured by the addition of a mid-twentieth century garage. This non-contributing one-story garage has a flat roof.

The two and one-half story rear elevation of the drill shed features four groups of three windows on the first story and two groups of three windows on the second story. All of these evenly spaced windows are tall, narrow, round-arched openings containing double-hung sash with roughly hewn stone sills and chamfered brick surrounds. A single doorway is centrally located at grade on the rear facade and a brick chimney rises from the apex of the gable end.

The interior survives with a relatively high degree of integrity of design, materials and craftsmanship. In the administration building, pressed metal ceilings are found in the basement and first and second stories, although most first-story ceilings have been obscured by modern acoustic tiles. A variety of oak woodwork, including wainscoting, chair rails and door and window trim, survives intact, particularly on the second story. Plaster walls also survive intact, although some have been obscured by modern paneling. The entrance hall is virtually intact; notable features include the oak staircase and paneled double-doors into the drill shed. The east half of the first story, once a large open space,

---

OMB No. 1024-0018, NPS Form

United States Department of the Interior  
National Park Service

NATIONAL REGISTER OF HISTORIC PLACES  
CONTINUATION SHEET

Amsterdam (46th Separate Company) Armory  
Amsterdam, Montgomery County, New York

Section 7, Description, page 4

---

has been subdivided into small office spaces; the west half the the first story contains its original small office spaces, but modern paneling and dropped ceilings have been added.

The second story of the administration building survives virtually intact. The eastern half is occupied by the company meeting room (now known as the Kennedy Room), a large open space containing an elegant oak mantel and a variety of original furniture (glass-front bookcases, numerous wooden chairs and a massive meeting table). The former reading room, housed in the northeast corner tower, adjoins the Kennedy Room; the archway into the reading room is decorated with a pair of spindle friezes with the abbreviation "NG 46 NY" worked into the design. (The armory was built for the 46th Separate Company of the New York National Guard.) The west half of the second story contains the commander's office and officers' meeting room with a variety of intact features including a handsome mantel, oak wainscoting, pressed metal ceilings and oak woodwork around door and window openings.

Notable features in the drill shed include the original hardwood floors, wainscot ceiling and elegant balcony rails. The locker room, adjoining the east elevation of the drill shed, contains original oak lockers with decorative pierced designs. The northeast corner of the drill shed, underneath the balcony, has been subdivided into modern office and storage spaces. The mess hall and kitchen facilities are located in the basement under the locker room and eastern half of the drill hall; the former rifle range is located under the western half of the drill hall. Other than the pressed metal ceilings and original spatial configuration, there is little of historical note in the basement.

Amsterdam (46th Separate Company) Armory, Amsterdam, Montgomery County, NY

### B. Statement of Significance

#### Applicable National Register Criteria

(Mark an "x" in one or more boxes for the criteria qualifying the property for National Register listing.)

- ☒ A Property is associated with events that have made a significant contribution to the broad patterns of our history.
- ☐ B Property is associated with the lives of persons significant in our past.
- ☒ C Property that embodies the distinctive characteristics of a type, period, or method of construction or represents the work of a master, or possesses high artistic values, or represents a significant and distinguishable entity whose components lack individual distinction.
- ☐ D Property has yielded, or is likely to yield, information important in pre-history or history.

#### Criteria Considerations: NA

- ☐ A owned by a religious institution or used for religious purposes.
- ☐ B removed from its original location.
- ☐ C a birthplace or grave.
- ☐ D a cemetery.
- ☐ E a reconstructed building, object or structure.
- ☐ F a commemorative property.
- ☐ G less than 50 years of age or achieved significance within the past 50 years.

#### Narrative Statement of Significance

See attached continuation sheets.

### 9. Major Bibliographical References

See attached continuation sheets

Previous documentation on file (NPS): Primary location of additional data:

- |   |  |
|---|--|
| <input type="checkbox"/> preliminary determination of individual listing (36 CFR 67) has been requested | <input checked="" type="checkbox"/> State historic preservation office |
| <input type="checkbox"/> previously listed in the National Register                                     | <input type="checkbox"/> Other State agency                            |
| <input type="checkbox"/> previously determined eligible by the National Register                        | <input type="checkbox"/> Federal agency                                |
| <input type="checkbox"/> designated a National Historic Landmark  | <input type="checkbox"/> Local government                              |
| <input type="checkbox"/> recorded by Historic American Building Survey # _____                          | <input type="checkbox"/> University                                    |
| <input type="checkbox"/> recorded by Historic American Engineering Record # _____                       | <input type="checkbox"/> Other   |

#### Area of Significance

(Enter categories from instructions.)

#### Military History

#### Architecture

#### Period of Significance

1895

#### Significant Dates

1895

#### Significant Person

(Complete if Criterion B is marked above.)

na

#### Cultural Affiliation

na

#### Architect/Builder

Isaac Perry, State Architect

Name of repository:

Division for Historic Preservation

OMB No. 1024-0018, NPS Form

United States Department of the Interior  
National Park Service

NATIONAL REGISTER OF HISTORIC PLACES  
CONTINUATION SHEET

Amsterdam (46th Separate Company) Armory  
Amsterdam, Montgomery County, New York

Section 8, Significance, page 5

---

Statement of Significance

The Amsterdam (46th Separate Company) Armory, completed in 1895, is architecturally and historically significant as an intact, representative example of a late nineteenth century armory built to house a local unit of the New York State Army National Guard. Designed by State Architect Isaac Perry for the 46th Separate Company, the armory retains a high degree of integrity of design, materials, craftsmanship, feeling and association and embodies the three distinctive characteristics of the property type as discussed at length in the Multiple Property Documentation Form Army National Guard Armories in New York State (Section E: Historic Overview). First, it served not only as a military facility and social club for the National Guardsmen, but also as a civic monument designed to symbolize governmental strength and presence within a community and to inspire fear, awe, pride and patriotism; second, in form and plan, it consists of an administration building with an attached drill shed at ground level; third, in design and decoration, it reflects the influence of medieval military architecture. The armory is also historically significant for its association with National Guard, an integral component of the American military system.

Typical of armories designed by State Architect Isaac Perry in upstate New York during the late nineteenth century, the Amsterdam Armory is a fortress-like, castellated style edifice designed to inspire fear and awe among the so-called "dangerous lower classes" (i.e., Anarchists, Socialists and Communists as well as most immigrants and laborers) and pride and patriotism among the law-abiding middle and upper classes. Like all other Perry-designed armories, the Amsterdam Armory reflects the influence of medieval military architecture and the Richardsonian Romanesque style, including bold, massive proportions, polychrome brick and stone masonry construction, a raised and battered stone foundation, soaring four- and five-story towers (originally with crenelated parapets), and massive, stone trimmed arcading.

The Amsterdam Armory is one of nearly twenty extant armories attributed to Perry. (According to currently available information, as many as forty armories are believed to have been designed [or overseen] by Perry.) The Amsterdam Armory is typical

OMB No. 1024-0018, NPS Form

United States Department of the Interior  
National Park Service

NATIONAL REGISTER OF HISTORIC PLACES  
CONTINUATION SHEET

Amsterdam (46th Separate Company) Armory  
Amsterdam, Montgomery County, New York

Section 8, Significance, page 6

---

of Perry's designs for relatively prosperous mid-sized communities: although not as grand as Perry's armories in the major cities of Brooklyn and Buffalo, it is far grander than his designs for armories in smaller communities such as Hoosick Falls or Mohawk. An armory virtually identical to the Amsterdam Armory is located in Walton (Delaware County; NRE: May 1993); examples of armories similar to Amsterdam's are found in Hornell, Glens Falls, Whitehall, Tonawanda, Hudson and Ogdensburg. (The Hornell and Glens Falls armories are already listed in the National Register and the other three were determined eligible in May 1993. See Section E [Historic Overview] of the MPDF for further discussion of Perry.)

The Amsterdam Armory is also historically significant under criterion A for its association with American military history in general and Army National Guard history in particular. (The armory was built for the 46th Separate Company; little information is currently available about that company.) The history of the National Guard (and the significance of its related armories) is discussed at length in Section E (Historic Overview) of the Multiple Property Documentation Form for Army National Guard Armories in New York State. In summary, the volunteer militia (i.e., the National Guard) has been, and to a large extent still is, the backbone of the American military system since the Colonial era. The Amsterdam Armory, like virtually all other National Guard armories, remains a prominent visual reminder of and monument to the pivotal role played by the volunteer militia in American military history.

Remaining in use as an active military facility until early 1994, the highly intact Amsterdam Armory remains an imposing civic monument and important local landmark in the city, recalling the long and distinguished history of the New York National Guard.

OMB No. 1024-0018, NPS Form

United States Department of the Interior  
National Park Service

NATIONAL REGISTER OF HISTORIC PLACES  
CONTINUATION SHEET

Amsterdam (46th Separate Company) Armory  
Amsterdam, Montgomery County, New York

Section 9, Bibliography, page 7

---

Major Bibliographical References

Albany, New York. Division for Historic Preservation. Research files.

Amsterdam, New York. Amsterdam Armory. Research files.

Fogelson, Robert M. America's Armories: Architecture, Society and Public Order. Boston: President and Fellows of Harvard College, 1989.

Haynes, Wesley. "Isaac G. Perry," M.A. Thesis, Columbia University, 1983.

Wright, Capt. Robert K., and Hylton-Greene, Renee. A Brief History of the Militia and the National Guard. Washington, D.C.: 1986.

---

## 10. Geographical Data

### UTM References

A	<u>1</u> <u>8</u>	<u>5</u> <u>6</u> <u>5</u> <u>3</u> <u>1</u> <u>0</u>	<u>4</u> <u>7</u> <u>5</u> <u>3</u> <u>4</u> <u>4</u> <u>0</u>
	Zone	Easting	Northing
C	<u> </u> <u> </u> <u> </u> <u> </u> <u> </u> <u> </u>	<u> </u> <u> </u> <u> </u> <u> </u> <u> </u> <u> </u> <u> </u> <u> </u>	<u> </u> <u> </u> <u> </u> <u> </u> <u> </u> <u> </u> <u> </u> <u> </u> <u> </u> <u> </u> <u> </u>
	Zone	Easting	Northing

B	Zone	Easting	Northing
D	Zone	Easting	Northing

## Boundary Justification

11. Form Prepared By

name/title Nancy L. Todd, Program Analyst  
organization NYSHPO, Division for Historic Preservation date April 1994  
street & number Peebles Island, PO Box 189 telephone 518-237-8643  
city or town Waterford state NY zip code 12188-0189

### Additional Documentation

Additional Documentation  
Submit the following items with the completed form:

## Continuation Sheets

## Maps

A USGS map (7.5 or 15 minute series) indicating the property's location.  
A sketch map for historic districts and properties having large acreage or numerous resources.

## Photographs

Representative black and white photographs of the property.

Additional items

(check with the SHPO or FPO for any additional items)

Property Owner

Property Owner  
(Complete this item at the request of SHPO or FPO.)

name

street & number

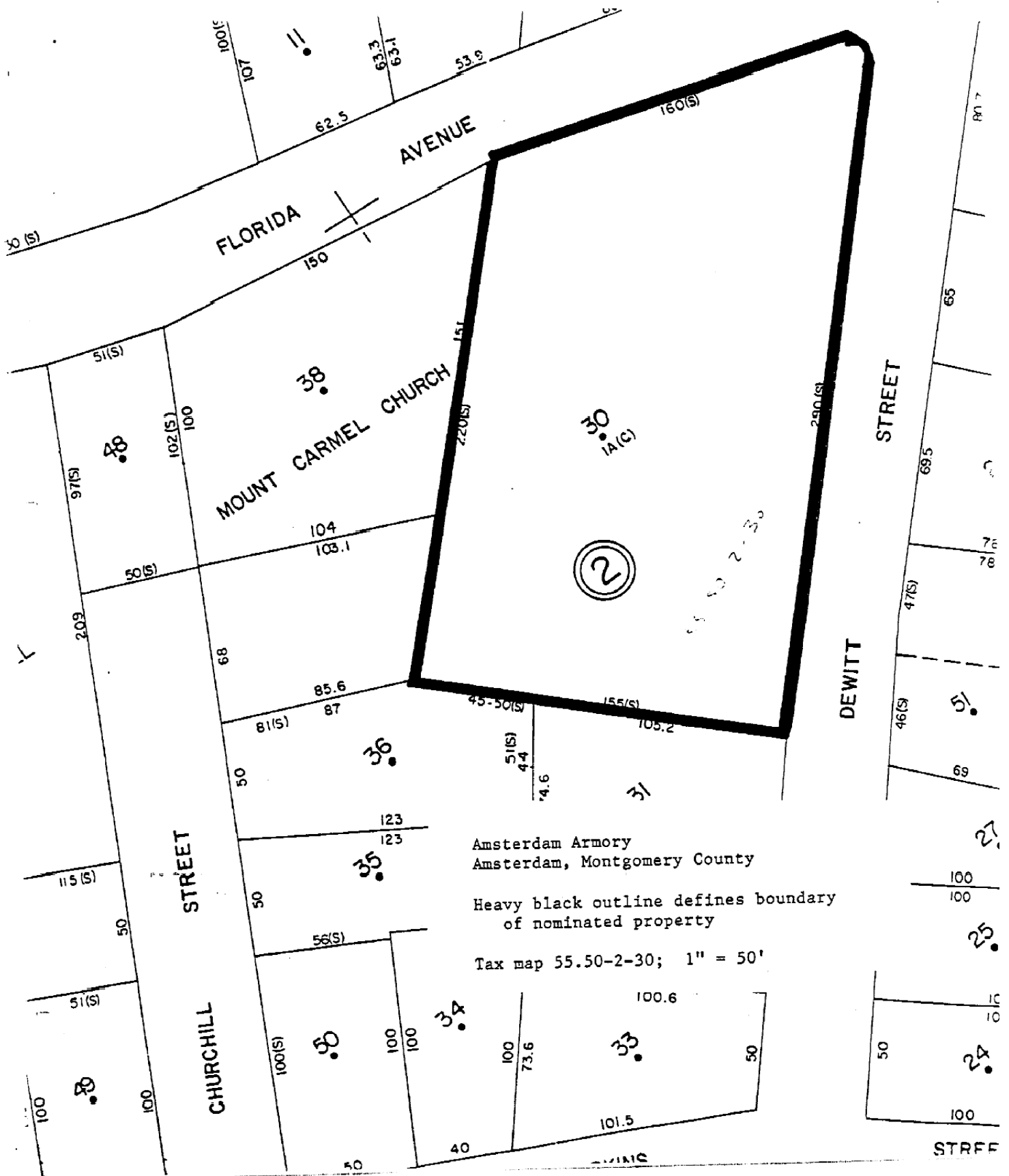
city or town

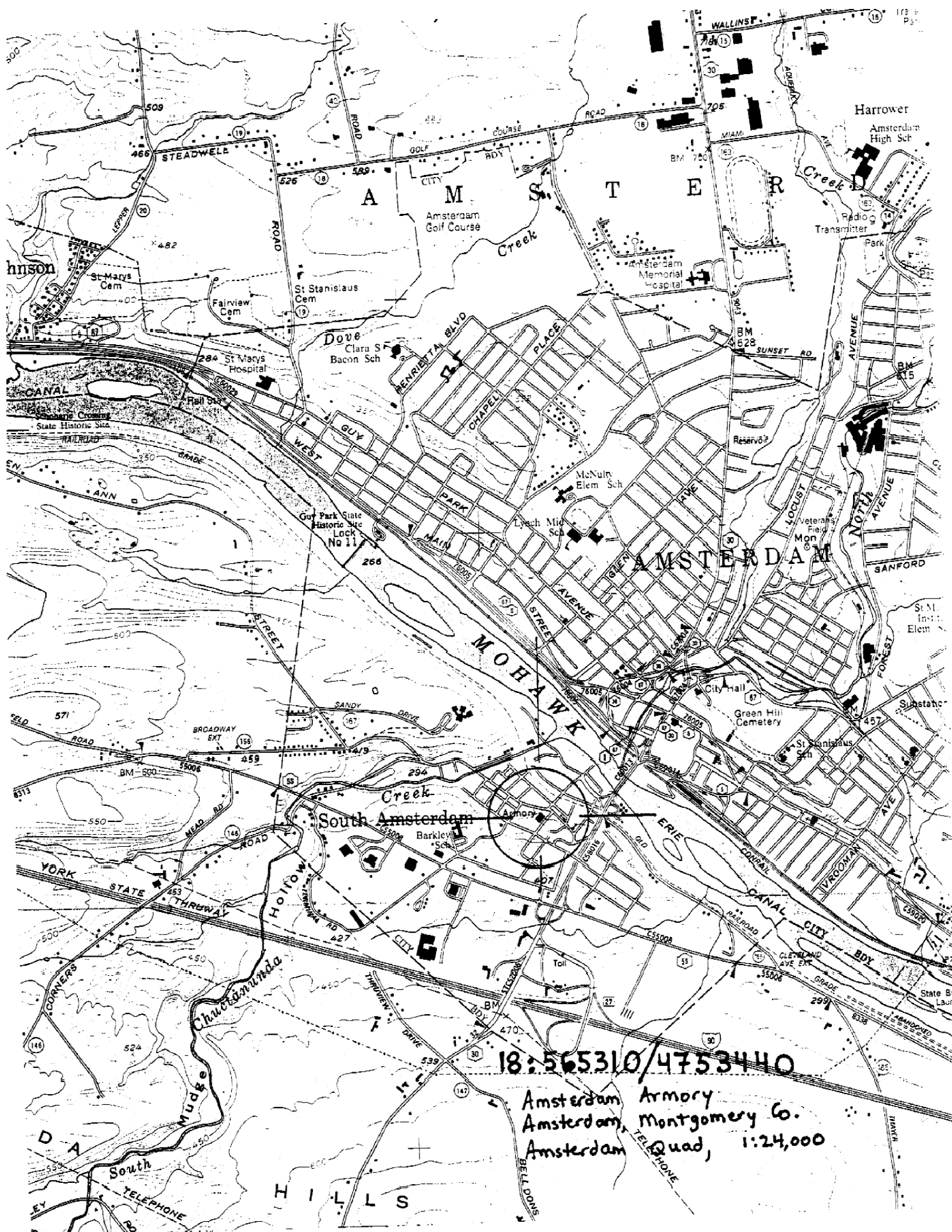
state

zip code

**Paperwork Reduction Act Statement:** This information is being collected for applications to the National Register of Historic Places to nominate properties for listing or determine eligibility for listing, to list properties, and to amend existing listings. Response to this request is required to obtain a benefit in accordance with the National Historic Preservation Act, as amended (16 U.S.C. 470 et seq.).

**Estimated Burden Statement:** Public reporting burden for this form is estimated to average 18.1 hours per response including the time for reviewing instructions, gathering and maintaining data, and completing and reviewing the form. Direct comments regarding this burden estimate or any aspect of this form to the Chief, Administrative Services Division, National Park Service, P.O. Box 37127, Washington, DC 20013-7127; and the Office of Management and Budget, Paperwork Reduction Project (1024-0018), Washington, DC 20503.







21-9

Amot

Amsterdam Armory  
Amsterdam, Montgomery Co.  
Photo: N Todd 1992  
Neg: OPRHP, Albey  
View front (north) facade  
from NE

Amsterdam Armory  
Amsterdam, Montgomery Co.  
Photo: N Todd  
Neg: OPRHP, Alb.  
View: Sally port

Amsterdam Armory

Amsterdam, Montgomery Co.

Photo: N. Todd, 1992

Neg: OPRHP

View front (north) facade  
from NW

1-14

Amsterdam Armory  
Amsterdam, Montgomery Co.

Arm

Photo: N Todd, 1992

Neg: OPRHP

View: East elevation  
(locker room)



Amsterdam Armory  
Amsterdam, Montgomery Co.

Photo: N Todd 1992

Neg: OPRHP

View: ~~Detail, company~~

Detail, main staircase

9-2

Amst

9-10

Amsterdam Armory  
Amsterdam, Montgomery Co.

Photo: N Todd 1992

Neg: OPRHP, A1b

View: Detail, company  
meeting room